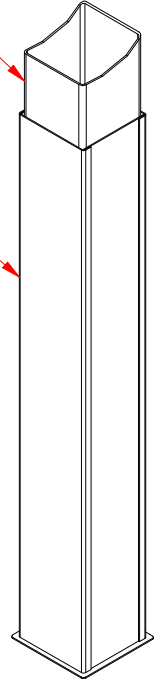
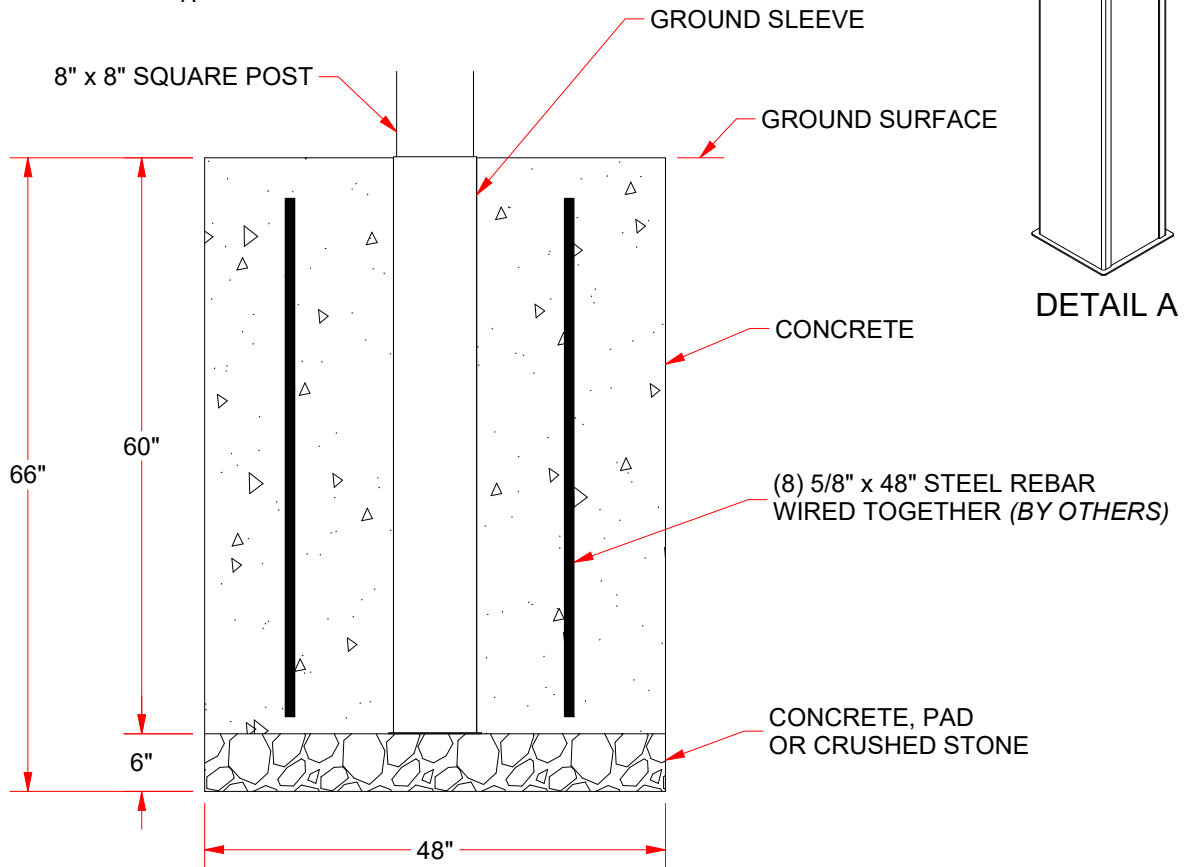


8" x 8" SQUARE POST

11 GAUGE (0.1196") STEEL SHEET METAL



DETAIL A



**FEATURES:**

- Heavy duty ground sleeve for 8" square Mega Outdoor Batting Tunnel Systems (MPCTF)
- Steel construction with bottom base plate (shipping weight 69 lbs each)
- Sold individually



Know what's below.  
CALL BEFORE YOU DIG.

**WARNING: Check Local Building Codes Before Installing Foundation**

The dimensions provided are based on typical soil conditions and are for general guidance only. Before beginning any footing installation, consult your local building codes, as requirements may vary by location. If local codes specify stricter standards, those must be followed. Always ensure your installation is safe, legal, and fully code-compliant.